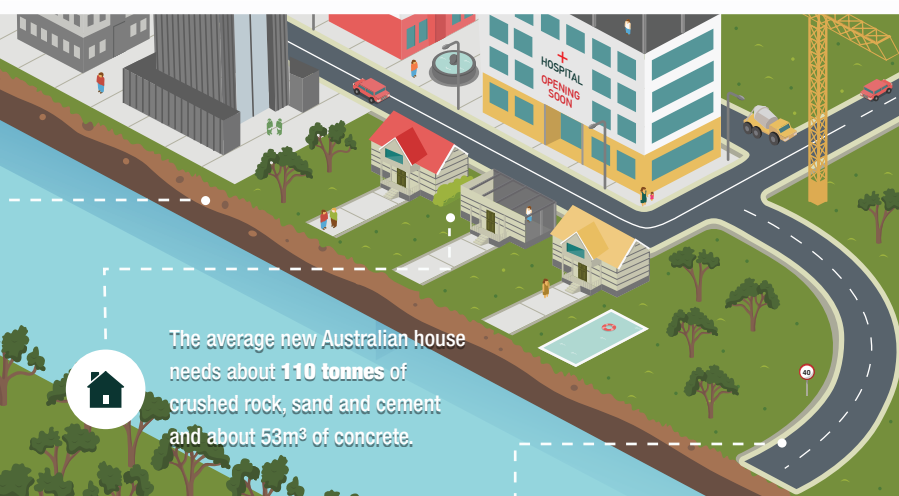


Quarries are **close to market** to support building and infrastructure needs.



The average new Australian house needs about **110 tonnes** of crushed rock, sand and cement and about 53m³ of concrete.



Quarry materials make up **80% of concrete** and more than **90% of roads** in Australia.



Continual and progressive **rehabilitation** occurs throughout the life of the quarry.



Natural land buffers minimise local impacts.

Mitigation measures are used to reduce noise and environmental impacts.



Australian quarries provide **local jobs** and support local industry.

Each Australian requires **7 tonnes** of sand, rock and gravel a year to create the infrastructure to service their needs.



OFFICE

QUARRY

Many years of long term, **thoughtful planning** leads to the best outcomes and approvals.



Quarries provide crucial support for the **\$160 billion** construction industry which employs a massive 9% of the Australian workforce.



Water management is critical within a quarry. Special water systems are used to capture water and **recycle** it for use.



Truck management checks weight and minimises dust before driving on public roads.



Generally only a **small proportion** of the entire land is quarried at one time. The rest is forested and natural habitats act as buffer zones which attract and protect animals.



STONE, GRAVEL AND SAND

AUSTRALIA'S ESSENTIAL RAW MATERIALS

Brought to you by:

